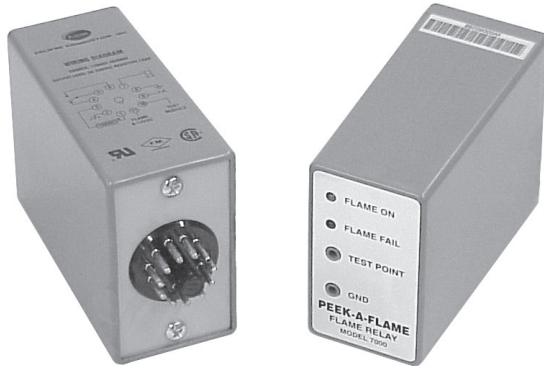




Peek-A-Flame Sensor Module

Series 7000



The Peek-A-Flame Relay Series 7000 is a sensor module that activates a relay when a flame is detected by an ultraviolet sensor or a flame rod. The Peek-A-Flame is for flame detection only; it will not detect safe start, safety lockout, load switching or any other safety procedures.

- UL recognized, CSA certified, & FM approved. (120 VAC version only.)
- Plugs into an industry standard 11-pin base.

- Test point at the front permits direct reading of the flame signal level, 0-12 VDC.
- Analog output on Pin #11 for remote monitoring by a PLC or similar device.
- "Flame On" light
- "Flame Fail" light indicates test condition and can be activated remotely by applying 12-120 VAC or VDC to Pin #10. Contacts are also activated between Pin #5 and Pin #6. A test signal is output on Pin #11.

Specifications

Applications:

For use with ultraviolet scanners (p.n. 49600-90, 49600-91, 49602-91, 20898) or flame rods

Voltage:

120 VAC, 50/60 Hz, .1 Amp (p.n. 49700) or 220 VAC, 50/60 Hz, .1 Amp (p.n. 49703)

Electrical Current Loading:

2A or less on pins 4, 5 and 6

Flame Fail Response Time:

3 seconds

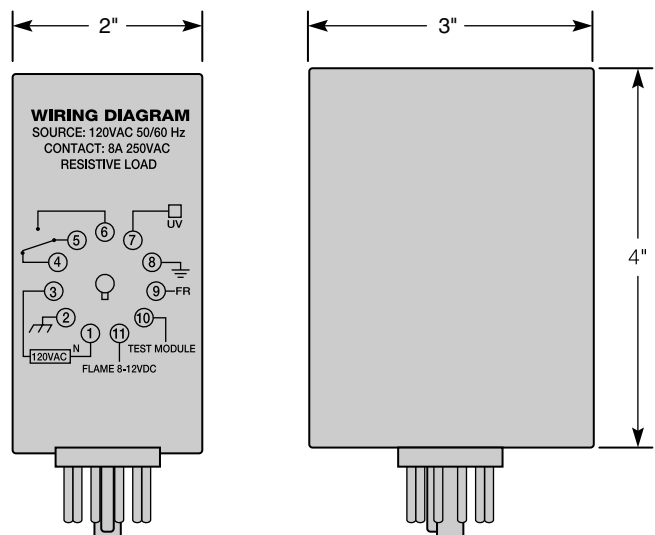
Temperature Range (Ambient):

-40° to +140°F

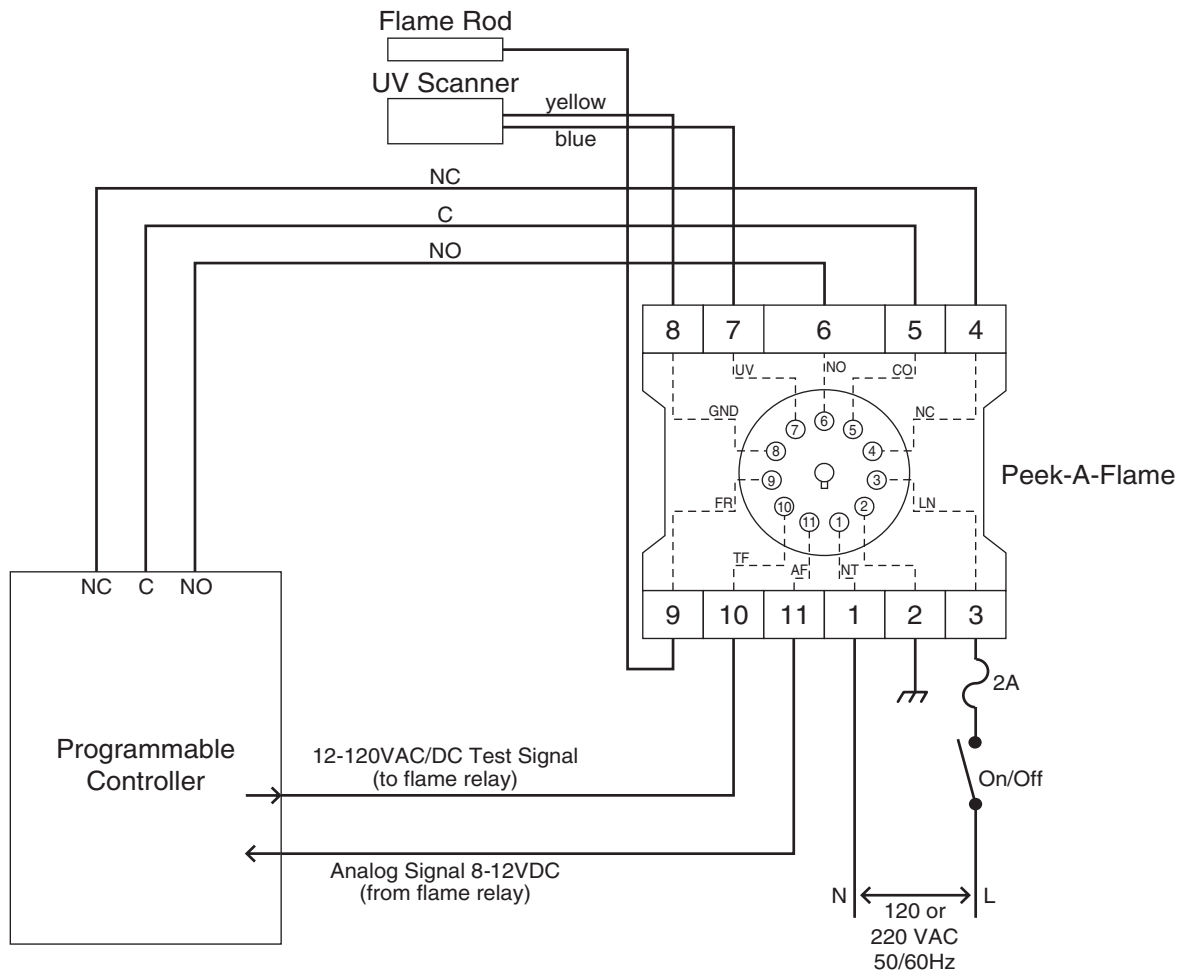
Mounting Base:

Standard 11-pin relay base (p.n. 49701)
Spring Retaining Kit (p.n. 49704)

Dimensions



Typical Application

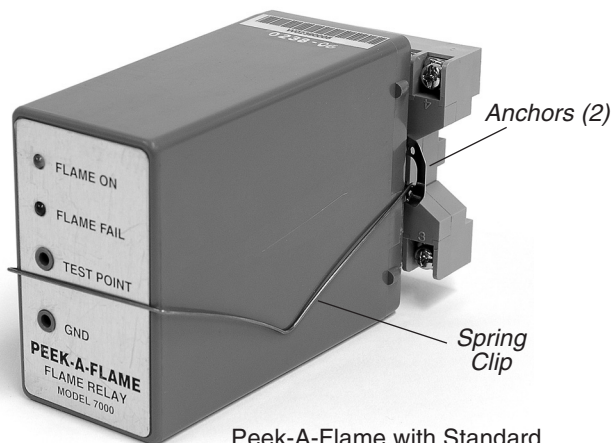


In this application, the programmable controller (PC) can test the flame relay for proper function by applying voltage to Pin #10 and monitoring the contact action on Pins #4, #5 and #6 (Pin #4 opens and Pin #6 closes with respect to pin #5). The "Flame Fail" light comes on and a signal voltage is output on pin 11 and the "Test Point".

During normal operation, a flame is sensed by either the flame rod or the U.V. scanner. If a flame is present, the relay contacts (Pins #4, #5 and #6) will actuate, producing a "Flame On" output to an external device. In addition, Pin #11 provides an analog signal output of 0-12 VDC, indicating active flame signal level.

NOTES: If Pin #10 is not used for remote testing, it must be jumpered to Pin #1 (neutral).

Mounting Base & Spring Clip



Peek-A-Flame with Standard 11-pin relay base (p.n. 49701) and Retaining Kit (p.n. 49704)



Spring Clip (p.n. 49704) mounting detail, bottom view.

ECLIPSE
Innovative Thermal Solutions

Eclipse Combustion



Offered By:

Power Equipment Company
2011 Williamsburg Road
Richmond, Virginia 23231
Phone (804) 236-3800
Fax (804) 236-3882

www.peconet.com